

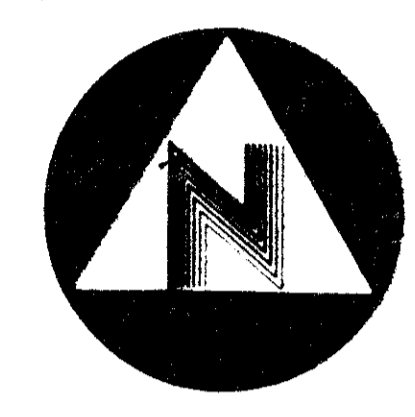
- Clubside At Boca West -

State of Florida)
 County of Palm Beach)
 This Plat was filed for record
 at _____ this _____ day of
 _____, A.D., 1987, and
 duly recorded in Plat Book
 _____ on Pages thru _____
 John B. Dunkle,
 Clerk of the Circuit Court.
 By: _____ Deputy Clerk

- A Part Of Boca West, A Planned Unit Development -

- Lying In Sections 15 & 16, Township 47 South, Range 42 East, Palm Beach County, Florida.

February, A.D., Nineteen Hundred Eighty Seven

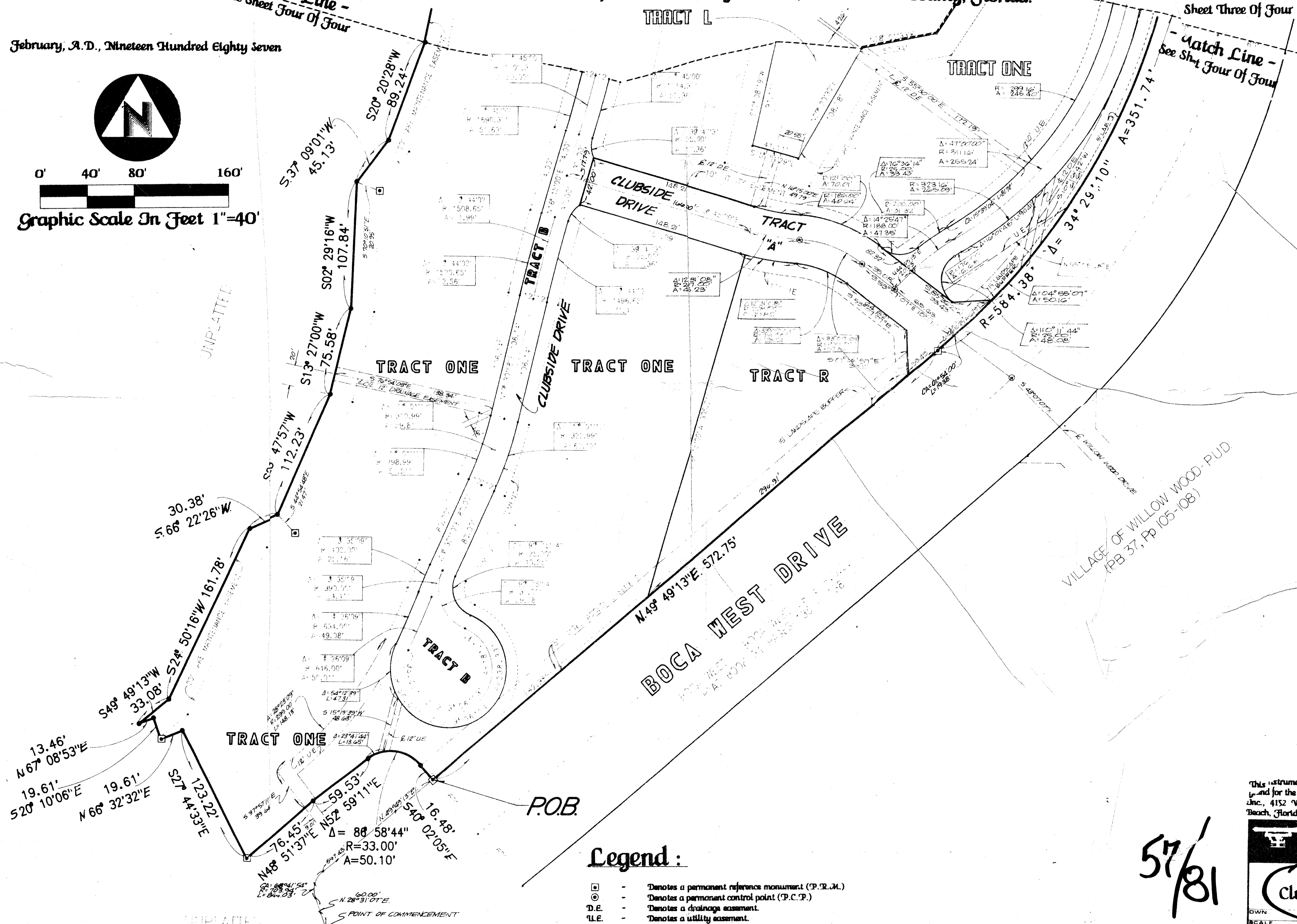


0' 40' 80' 160'
 Graphic Scale In Feet 1"=40'

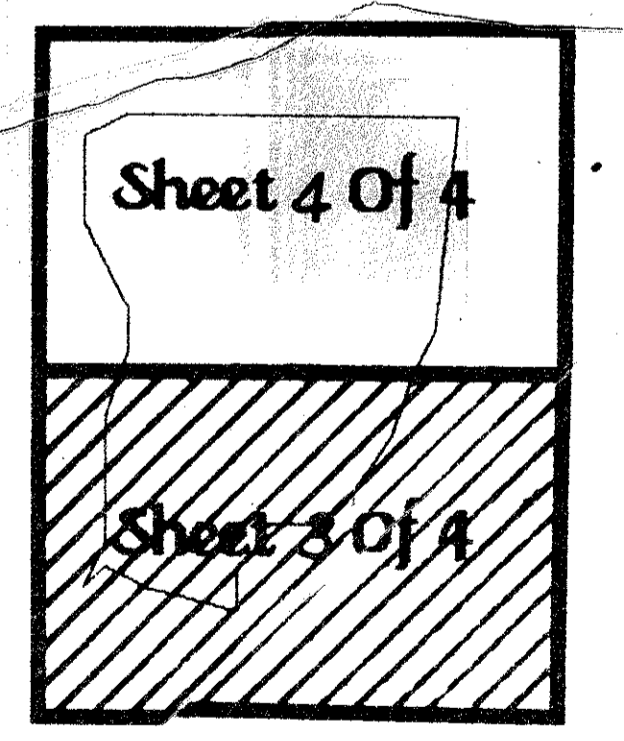
Sheet Three Of Four

Match Line -
 See Sheet Four Of Four

Match Line -
 See Sheet Four Of Four



0214-009



- Key Map -
 Not To Scale

This instrument was prepared by Wm. R. Van Campen, R.L.S.,
 and for the offices of Bench Mark Land Surveying & Mapping,
 Inc., 4152 West Blue Heron Boulevard, Suite 121, Riviera
 Beach, Florida, 33404. Phone: (305) 848-2102

BENCH MARK
 land surveying and mapping, inc.
 WEST PALM BEACH, FLORIDA

- Record Plat -
Clubside At Boca West

DWN	CKD	DATE	WD. NO.
SCALE	BY	FB	OF

Legend:

- - Denotes a permanent reference monument (P.R.M.)
- - Denotes a permanent control point (P.C.P.)
- D.E. - Denotes a drainage easement.
- U.E. - Denotes a utility easement.
- L.A.E. - Denotes a limited access easement.

57/81

SUBDIVISION Clubside At Boca West
 BOOK 57 PAGE 91
 FLOOD ZONE FLOOD MAP # 2306
 CLASS 15034 ZONING AR
 SE PUB 16053 ZONING AR
 PUB DATE 3/3/84
 TAZ 607